

For cutting, grooving, perforating and engraving of various materials using laser.

## Customer benefits

- Precise cutting of very delicate contours in a wide variety of materials
- Engraving without leaving marks on the flip side
- Economic production of print runs from 1 up to a few hundred copies
- No tooling costs as processing is done by laser
- Polar safety standard enabling GS-certification



## Description of the Digicut

Digicut opens up numerous possibilities for the creative processing of single sheets. The laser not only enables the most intricate contours to be cut, but also to be perforated, engraved and grooved - all in a single pass and on a wide variety of materials. And there are almost no limits in terms of design. By the use of a laser no additional tooling costs arise.

The machine is loaded through the transparent cover on the top. After lifting the cover the material to be processed is manually positioned against the gauge and aligned. Via a four-line display the operator selects the corresponding job, and starts processing. The necessary adjustments for processing, such as the intensity and speed of the laser, are defined in advance through color specific settings in the printer driver. Once the Digicut has completed the job it gives a signal tone. The operator can manually take out the material by lifting the top cover.

A small selection of products that can be manufactured with the Digicut includes: cards, invitations, envelopes, folders, writing paper, samples, business cards, place cards, lanterns, jigsaws, bookmarks and many others.

## Technical data

|   |   |
|---|---|
| Laser Source (sealed CO2 Laser, air-cooled)   | 30 W  |
| Work area [x × y]                             | 860 × 610 mm   33.86 × 24.02 in                   |
| product thickness max. (with honeycomb table) | 40 mm   1.57 in                                   |
| Printer interface                             | USB 2.0   |
| Dimensions (W × D × H)                        | 1,365 × 880 × 1,010 mm   53.74 × 34.65 × 39.76 in |

Must be made available by the customer:

PC with Windows OS and vector-oriented drawing program, e.g. CorelDraw, Adobe Illustrator



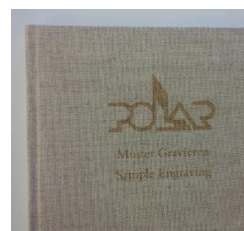
Paper



Cardboard



Wood



Textiles



Tile/Stone